

May 2026

Dear Customer,

## Shropshire Surface Dressing Programme – Summer 2026

The **B4555 - Main Road, Highley** is programmed for Surface Dressing between **Monday 18<sup>th</sup> May to Friday 12<sup>th</sup> June during the hours of 9:30am to 4pm.**

The work is currently programmed to take place as follows: -

**18<sup>th</sup> – 20<sup>th</sup> May** – Road Closure for Surface Dressing

**2<sup>nd</sup> – 3<sup>rd</sup> June** – Road Closure for Surface Seal (No vehicle access whilst curing)

**11<sup>th</sup> – 12<sup>th</sup> June** – Road Closure for White Lining

**Please note that during the Surface Seal there will be no vehicle access whilst the surfaces cures, this takes approximately 30 minutes.**

The road will have an initial sweep within 24 hours of the new surface being laid. The sweeper returns after 7 days to remove any residual loose chippings.

### How will this affect traffic?

Signs will be erected in the road before starting the work and the work will be completed as quickly as possible. A signed diversion route will be in place as per map below.

### Will there be access to my property/business?

Yes, if you are looking to access a property or business, we will provide access for you.

We will have staff on site who are able to assist with access. Our priority is to keep you and our staff safe, this means that there may be a bit of a wait while we make the site safe for you to travel through the closure or direct you to another entry point.

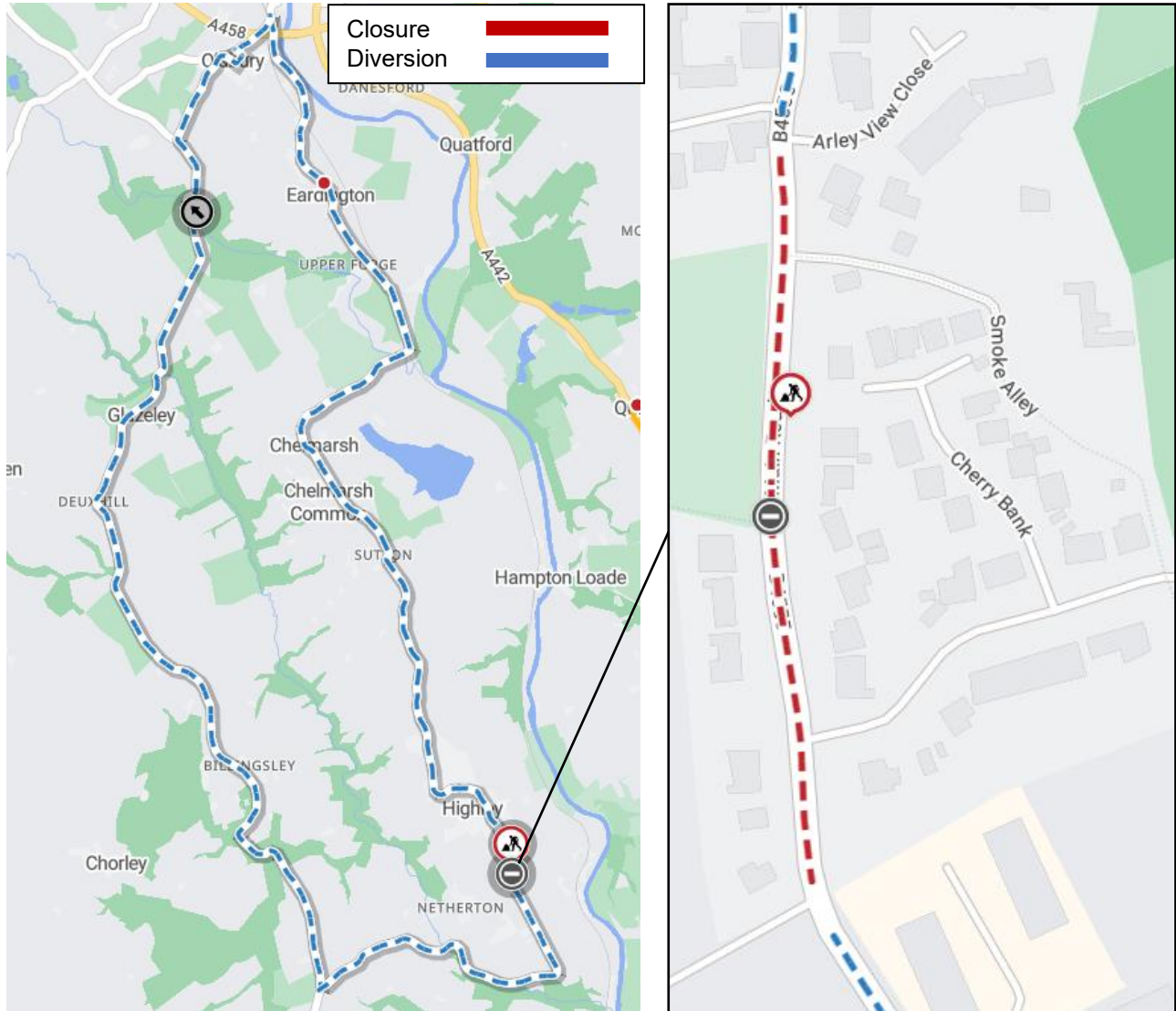
During the work, access to the works area will be restricted to:

- Essential highway personnel
- Residents who live and reside within the road closure.
- Businesses located within the closure (if applicable)
- Pedestrians, dismounted cyclists and equestrians.
- Emergency vehicles
- Utility or Public service vehicles when safe to do so

### How can you help us?

Please ensure vehicles are not parked on the road during the day whilst the work is in progress. Please be mindful that we can only provide access for properties/businesses within the work area.

## Where is the work?



## Why use Surface Dressing?

- To improve the skid resistance of the road surface.
- To seal the road against ingress of water, preventing potholes forming in winter.
- To extend the life of an existing surface and arrest deterioration of the surface.
- Surface dressing is a preventative method of maintenance. The process does not reshape or increase the strength of the road.

## Find out more!

Should you have any queries or wish to discuss any of the above please contact Shropshire Council's Highways Customer Services Centre on 0345 6789006. Full details of work to be carried out in your area including any changes can be found on <https://one.network> and <https://next.shropshire.gov.uk/roads-and-highways/highways-maintenance/resurfacing-and-surface-dressing/>

Kind regards  
**Shropshire Highways**